



CONNECT Beyond

A Regional Mobility Initiative

CONNECT Beyond is a two-state, 12 county regional mobility initiative coordinated by the Centralina Regional Council and the Metropolitan Transportation Commission to create a unified regional transit vision and plan.

Our region is growing fast. Access to reliable, efficient and well-connected transportation options is one of the most important factors to ensure everyone can benefit. We need to find solutions to promote and harness economic growth, while helping our neighbors and visitors easily get where they want and need to go. This will require collaboration, insight, creativity and a bold vision.

We aim to provide our study partners with transportation solutions that will enhance mobility and access.

For more information, contact our project team at contact@connect-beyond.com or visit www.connect-beyond.com.



CONNECT Beyond will...

DEFINE

a single coordinated regional transit vision

IDENTIFY

regional high capacity transit corridors

STRATEGIZE

multimodal and regional coordination

DEVELOP

action-oriented implementation approaches that support:

- Improved mobility and access
- Effective, regionally coordinated transit investments
- Coordinated and resilient transit operations to meet the needs of a growing and changing region
- Environmentally sustainable investments and policies
- Advancement of equitable and community-driven improvements

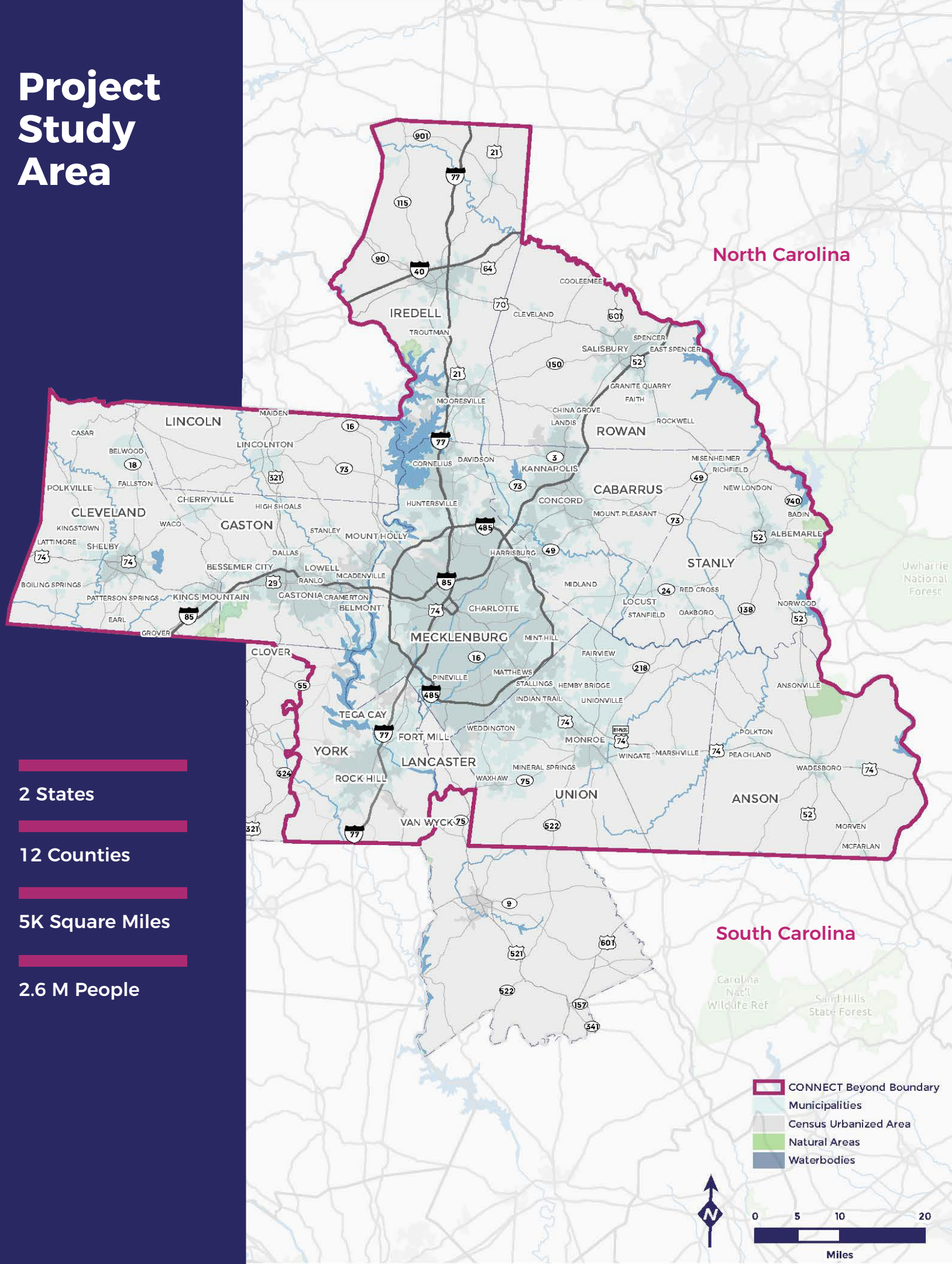
Project Study Area

2 States

12 Counties

5K Square Miles

2.6 M People



Funding Project Partners



Centralina	Centralina Regional Council
MTC	Metropolitan Transit Commission
CATS	Charlotte Area Transit System
NCDOT	North Carolina Department of Transportation
CRTPO	Charlotte Regional Transportation Planning Organization
GCLMPO	Gaston-Cleveland-Lincoln Metropolitan Planning Organization
RFATS	Rock Hill-Fort Mill Area Transportation Study
CRMPO	Cabarrus-Rowan Metropolitan Planning Organization
SCDOT	South Carolina Department of Transportation

Project Team

Jason Wager, AICP CEP
CONNECT Beyond Project Manager
Centralina Regional Council

Michelle E. Nance, AICP
Regional Planning Director
Centralina Regional Council

Jason Lawrence
Senior Transportation Planner
Charlotte Area Transit System

Bob Cook, AICP
Assistant Planning Director
Charlotte Regional Transportation Planning Organization

Advisory Committees

Our project partners and stakeholders will be an integral part of defining the future of mobility for our region. We’ve invited stakeholders from across our project study area to join advisory committees that will focus on developing key elements of this plan, including major policy decisions, community impacts and technical feasibility. We will also be launching a transit academy to educate, involve and empower civic leaders and community members to spread the word about the importance of a regional transit system, the transit vision and how to implement.

Community

Key regional influencers. Engagement via government, health & human services, economic development, employers, social services, and education.

Policy

Elected officials and policy experts from across the region (NC and SC).

Technical

Staff level technical resources. Land use, transportation, health, economic development, education, etc.

CONNECT Beyond Transit Academy

“Deeper dive” forum for committee members, civic leaders and community members.

Planning Process



1

Evaluate existing transit systems

- > What are we doing well?
- > Where are the gaps and barriers to mobility?

One of the first steps of CONNECT Beyond is to conduct a detailed evaluation of the region's current transit systems, past planning efforts and our partners' previous and current transportation plans. During this time we will also form stakeholder advisory committees and begin our initial public engagement.

2

Identify high capacity transit corridors

- > Which corridors would be good candidates for regional transit connections to best connect people to jobs, housing, medical services, education and other key destinations?

High capacity transit includes light rail, bus rapid transit, express bus, and commuter rail. In this step, we will identify high capacity transit corridors that are extensions of current or new corridors in the region.

3

Envision a Total Mobility Network

- > How can we best expand local services to increase transportation options and increase access to high capacity transit corridors?

In this step we will identify a multimodal transit network that will include a wide variety of transportation solutions, including bus connectors, demand response van networks, bike and pedestrian amenities, integration of ride share companies (e.g. Uber, Lyft, etc.), electric scooters, and other emerging technologies to supplement high capacity transit and commuter rail lines.

4

Develop implementation strategies

- > How can local transit providers and planning agencies use the results of the initiative?

In this step, we will coordinate with regional transportation planning organizations to develop implementation strategies for refining, connecting, and expanding the existing transit network that support the long-term vision and values of our region. These strategies are aimed to complement and support local planning processes such as the Comprehensive Transportation Plans (CTP) and Metropolitan Transportation Plans (MTP).